



4a. Primary Condition: CHD

West Hertfordshire PCT

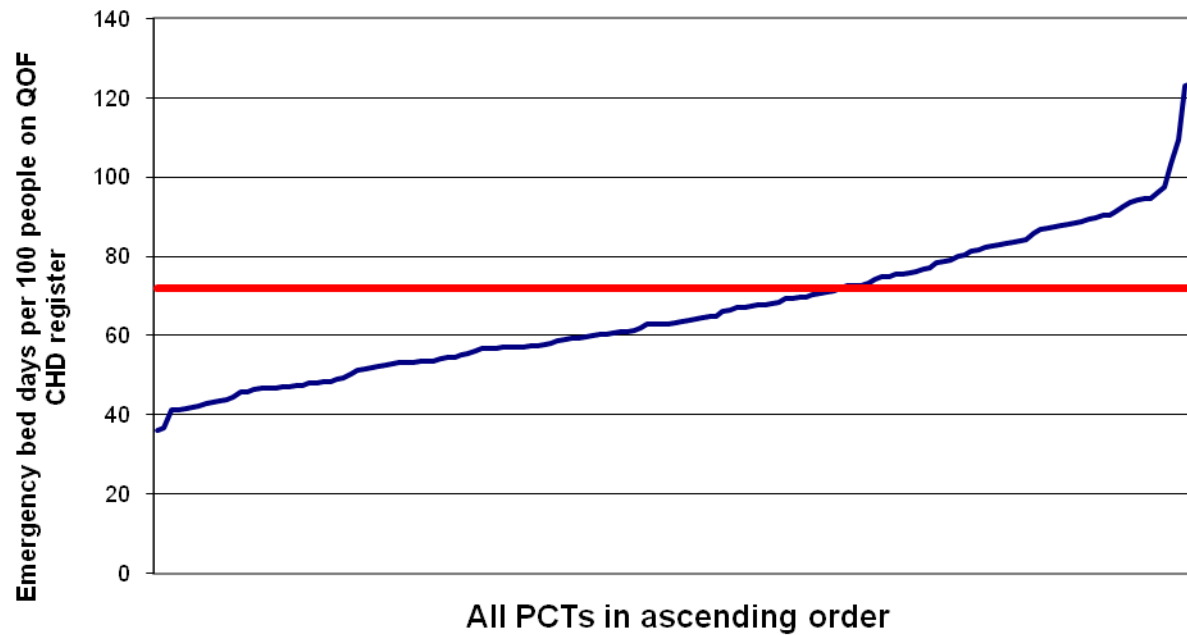
CHD

Chart: Emergency bed days per 100 people on the CHD QOF disease register by PCT.

West Hertfordshire PCT: 72 EBDs per 100 people on the QOF CHD register in 2005-06

In 2005-2006

- CHD contributed 11412 emergency bed days
- CHD contributed 1577 emergency admissions
- The average length of stay for CHD was 8 days



Red Line

shows position of West Hertfordshire PCT in relation to other PCTs

Source: Hospital Episode Statistics (HES), The Information Centre for Health & Social Care



4a. Primary Condition: Heart Failure

West Hertfordshire PCT

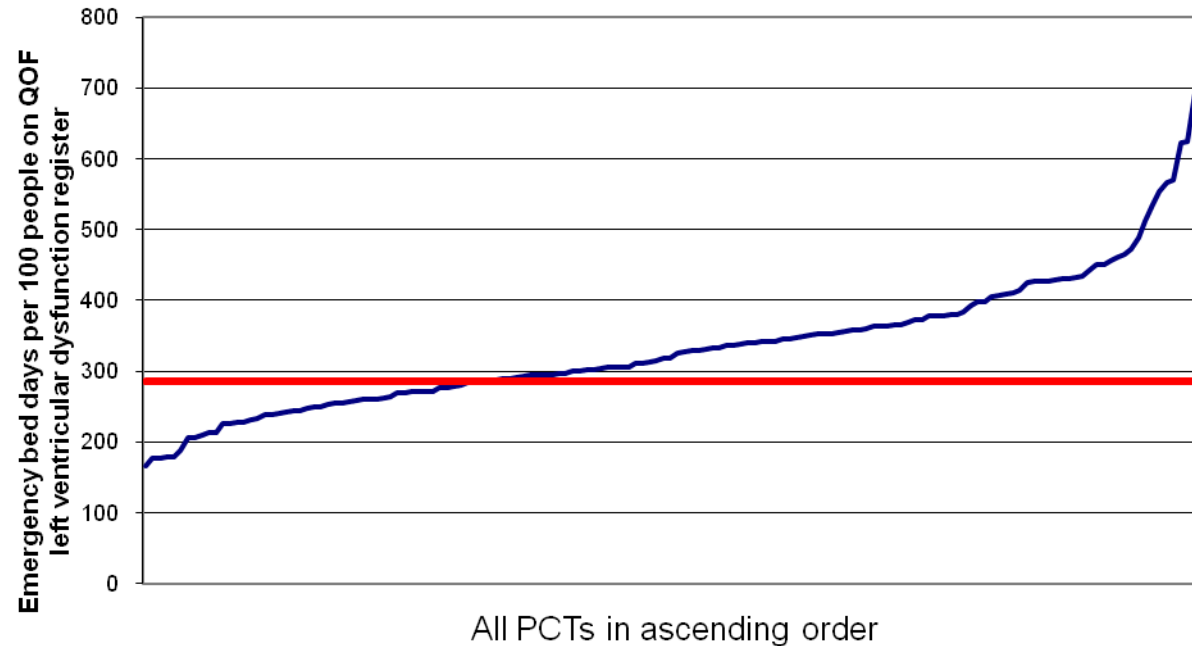
Heart Failure

Chart: Emergency bed days per 100 people on the left ventricular dysfunction QOF disease register by PCT.

West Hertfordshire PCT: 286 EBDs per 100 people on the QOF left ventricular dysfunction register in 2005-06

In 2005-2006

- **Heart Failure contributed 5808 emergency bed days**
- **Heart Failure contributed 454 emergency admissions**
- **The average length of stay for Heart Failure was 13 days**



Red Line shows position of West Hertfordshire PCT in relation to other PCTs

Source: Hospital Episode Statistics (HES), The Information Centre for Health & Social Care

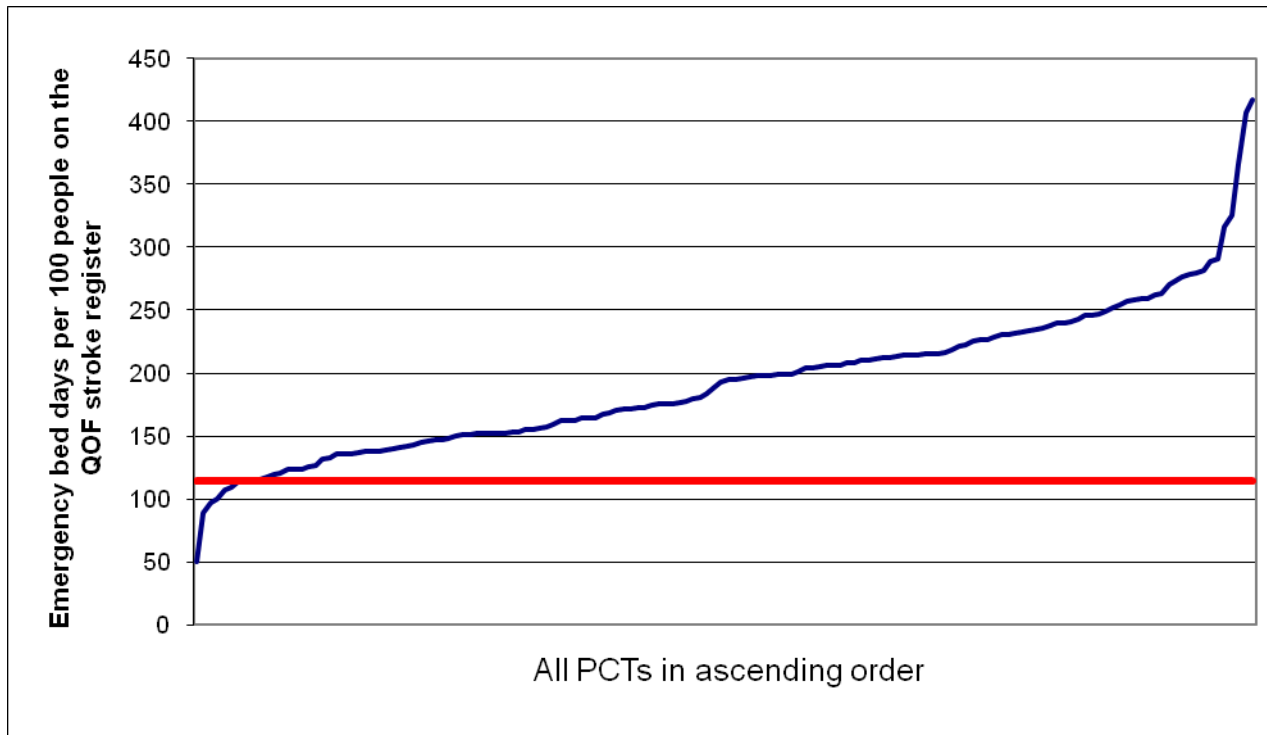


4a. Primary Condition: Stroke & TIA

West Hertfordshire PCT

Stroke & TIA

Chart: Emergency bed days per 100 people on the stroke and TIA QOF disease register by PCT.



West Hertfordshire PCT: 114 EBDs
100 people on the QOF stroke register in 2005-06

In 2005-2006

- Stroke & TIA contributed 10037 emergency bed days
- Stroke & TIA contributed 670 emergency admissions
- The average length of stay for Stroke & TIA was 15 days

Source: Hospital Episode Statistics (HES), The Information Centre for Health & Social Care

Red Line shows position of West Hertfordshire PCT in relation to other PCTs

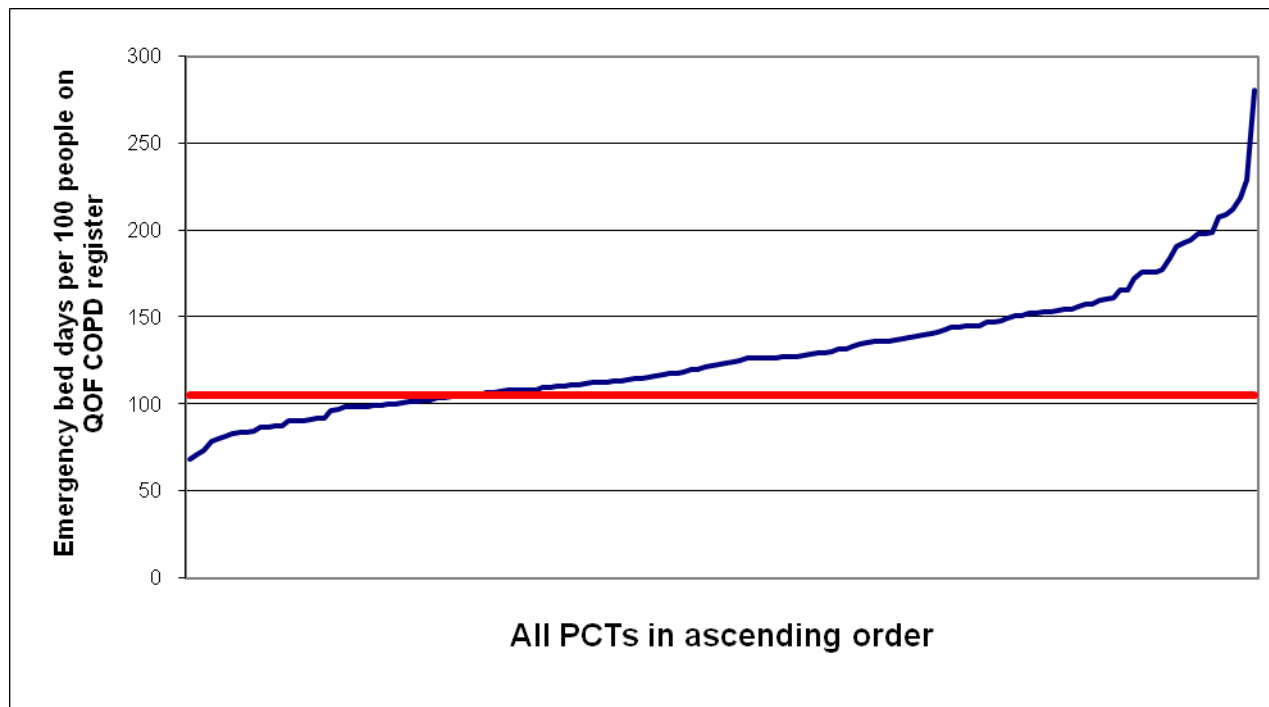


4a. Primary Condition: COPD

West Hertfordshire PCT

COPD

Chart: Emergency bed days per 100 people on the COPD QOF disease register by PCT.



- West Hertfordshire PCT: 105 EBDs per 100 people on the QOF COPD register for in 2005-06

In 2005-2006

- COPD contributed 6662 emergency bed days
- COPD contributed 782 emergency admissions
- The average length of stay for COPD was 9 days

Source: Hospital Episode Statistics (HES), The Information Centre for Health & Social Care

Red Line shows position of West Hertfordshire PCT in relation to other PCTs

